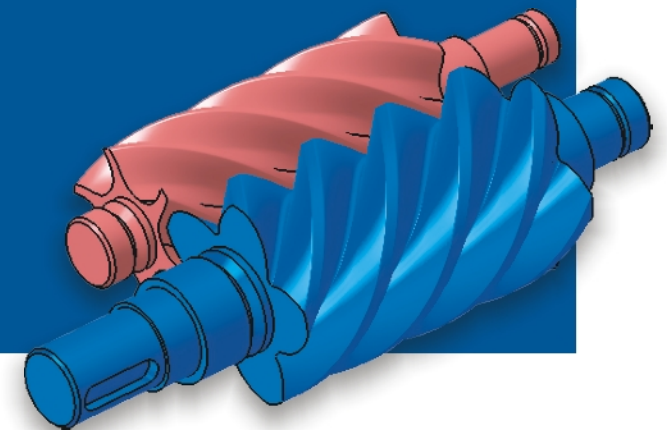
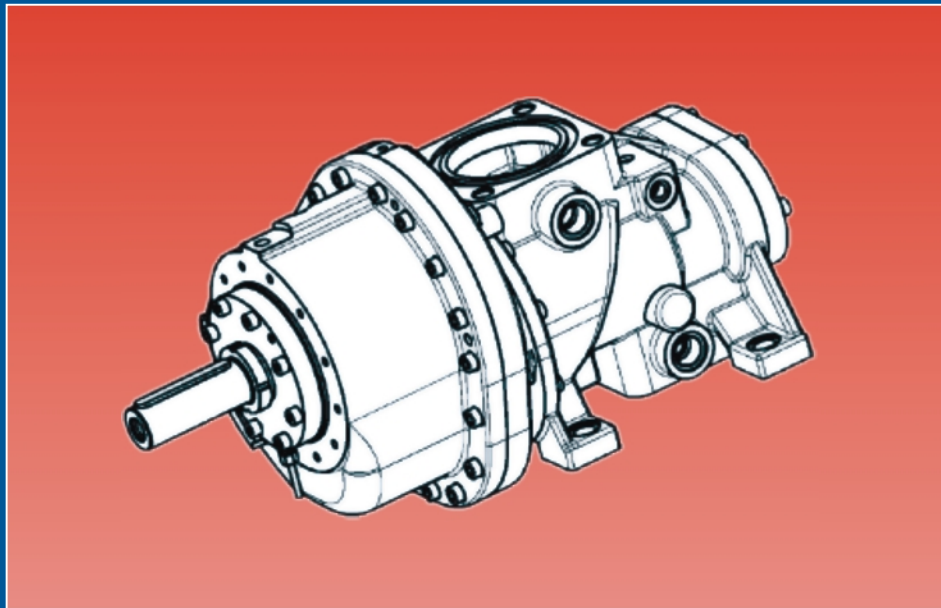




COMOTI
ROMANIAN RESEARCH &
DEVELOPMENT INSTITUTE FOR
GAS TURBINES

Natural Gas Screw Compressors - CU Series under IR licence



www.comoti.ro

Natural Gas Screw Compressors



COMOTI
ROMANIAN RESEARCH &
DEVELOPMENT INSTITUTE FOR
GAS TURBINES

Main Application Range

- Gas turbine power (Booster)
- Petrochemical and chemical processes
- Gas refinery for vent and flare applications
- Refrigeration
- Gas condensation
- Gas conveyance
- Corrosive gas compression
- Gas tank vapor recovery (Offshore)
- Oil well trapping gases



Natural Gas Screw Compressors



COMOTI
ROMANIAN RESEARCH &
DEVELOPMENT INSTITUTE FOR
GAS TURBINES

Partnership with GHH - Rand

- Since 1999 GHH RAND and COMOTI cooperate in the gas compression business;
- GHH RAND's oil injected CU- and CF-series have been the heart of COMOTI's gas applications;
- Effective January 2009 COMOTI **exclusively manufactures and supplies the CU-series** basis a license agreement;
- Since then COMOTI is happily taking customer's requests on all kinds of compressed gas applications.



www.comoti.ro

Natural Gas Screw Compressors



COMOTI
ROMANIAN RESEARCH &
DEVELOPMENT INSTITUTE FOR
GAS TURBINES

Operating overview

- Compression of natural gas recovered by separation from crude oil;
- Applicable for gas compression including natural, landfill or mine gas;
- The screw compressor units allow efficient gas separation starting at 0.6 bar(a);
- The CU-series is known for its durability to withstand arduous environments and operating conditions.



Natural Gas Screw Compressors



COMOTI
ROMANIAN RESEARCH &
DEVELOPMENT INSTITUTE FOR
GAS TURBINES

Product Range with Licence Agreement

Type	Volume flow [m ³ /h]		Min suction temperature [°C]	Max discharge temperature [°C]	Max suction pressure [bar abs.]	Max discharge pressure [bar abs.]
	U _{mr} =15m/s ↓	40m/s ↓				
CU 64G/D	86 - 230		- 40	120	9	26
CU 90G	170 - 455		- 40	120	9	26
CU 128G	345 - 919		- 40	120	9	26

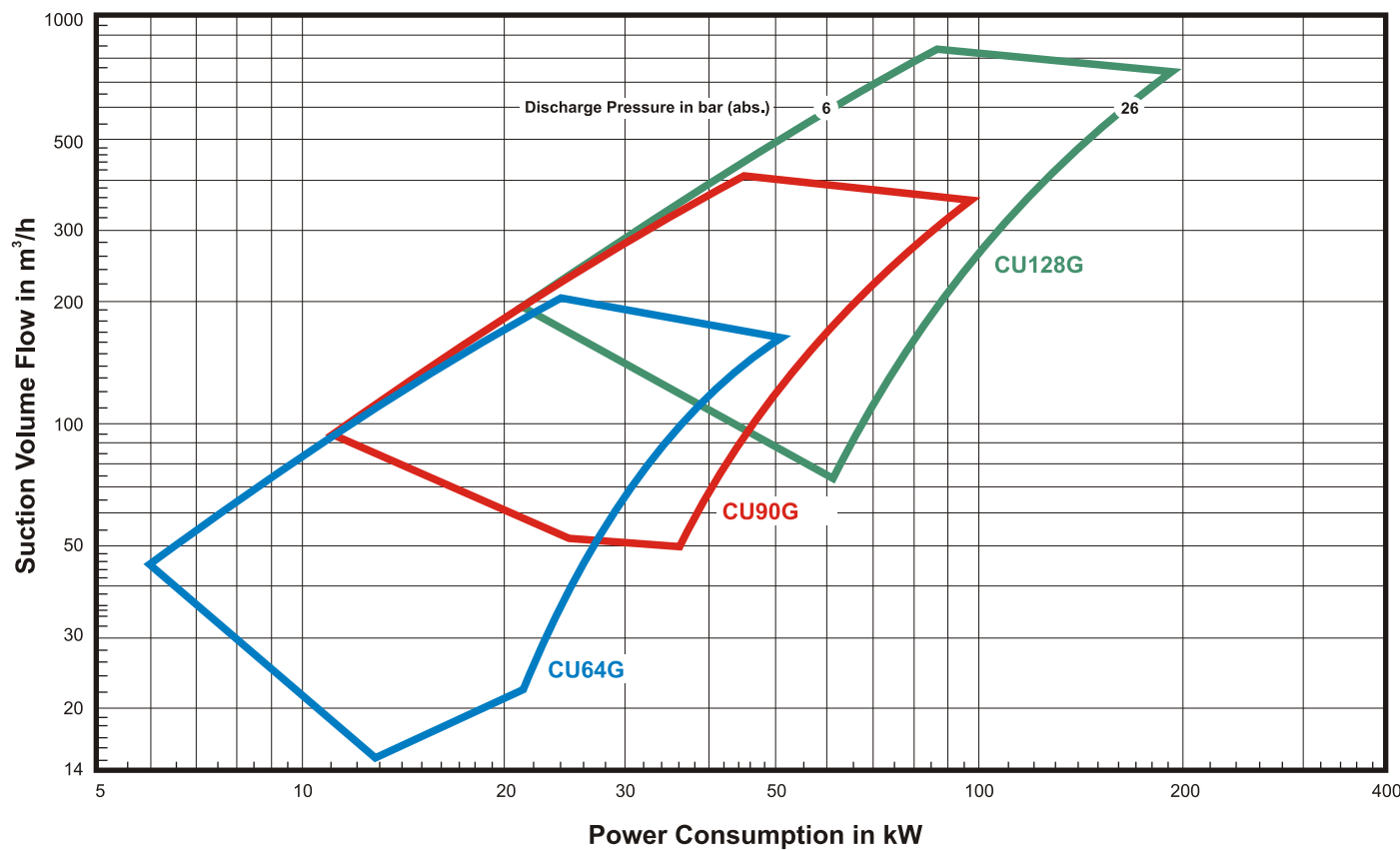
Series CU

Operating Range



COMOTI
ROMANIAN RESEARCH &
DEVELOPMENT INSTITUTE FOR
GAS TURBINES

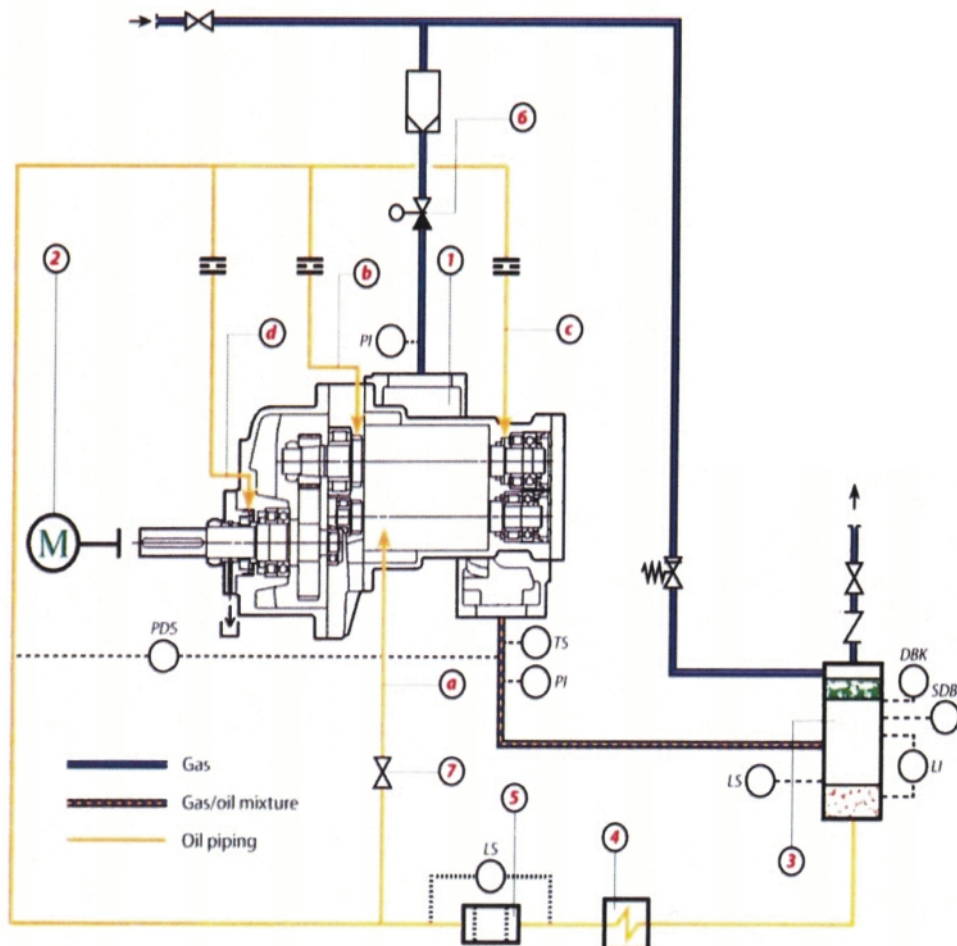
Medium: natural gas, re. Humidity 0% • suction press.: 1 bar (abs.) • suction temp.: 20°C, built-in volume ratio: 4.8



Package Scheme Sample



COMOTI
ROMANIAN RESEARCH &
DEVELOPMENT INSTITUTE FOR
GAS TURBINES



Circuit diagram

- 1 CU screw compressor
- 2 Drive motor
- 3 Oil tank with primary and secondary separator
- 4 Oil cooler
- 5 Oil filter
- 6 Suction valve
- 7 Adjustable throttle valve

- a Oil injection
- b Lube oil, suction-end bearings/gear unit
- c Lube oil, discharge-end bearings/balancing drum
- d Cooling oil, mechanical seal

www.comoti.ro



COMOTI
ROMANIAN RESEARCH &
DEVELOPMENT INSTITUTE FOR
GAS TURBINES

Quality Assurance Management System and Licences



- AEROQ Quality System Certifying according to SR EN ISO 9001:2008, SR EN ISO 14001:2005 and OHSAS 18001:2008;
- Authorized Supplier for Minister of Defense (The Quality System Certifying according to Romanian Minister of Defense NG OMCAS - 02.01 and SR EN ISO 900, by OMCAS);
- Certificated as Petrom SA - member of OMV Group - Products and Services Supplier.

www.comoti.ro

Address: 220D Iuliu Maniu Ave., 061126 Bucharest, ROMANIA, P.O. 76, P.O.B. 174

Phone: (+4)021/434.01.98, (+4)021/434.02.40; **Fax:** (+4)021/434.02.41

e-mail: contact@comoti.ro